



ORS Performance Dashboards

Immediate Detection. Immediate Resolution.

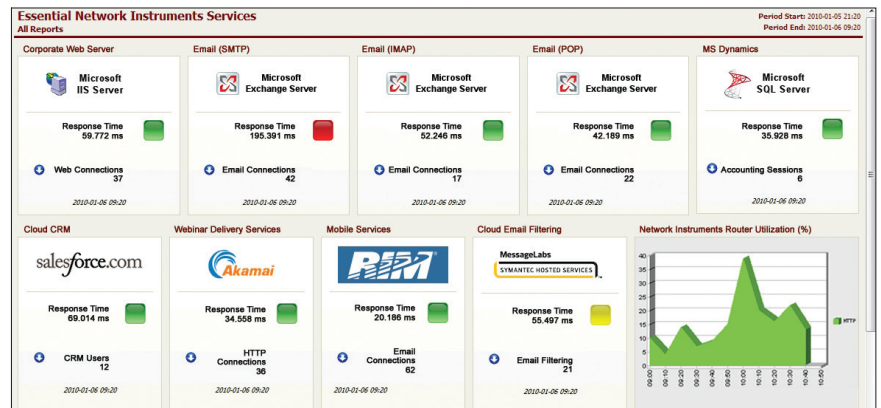
Regardless of the innumerable tasks network teams perform, their primary purpose is to ensure timely access to business-critical application services. Failure to quickly spot and resolve performance problems can unleash a flurry of panic from upper-management and users that can bury the team. Network teams need the right solutions to focus on problem prevention and proactive planning rather than inefficient fire fighting.

Performance at a Glance

To solve these challenges, Observer Reporting Server (ORS) now includes performance dashboards. They provide current application status to quickly assess service quality and respond to degrading performance before it impacts users. If an application requires further investigation, ORS drills into Observer® to provide all necessary data and detail.

Application Dashboard Capabilities

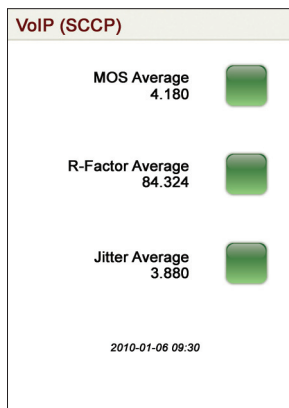
- Quickly assess performance for critical application services
- Identify performance issues before they impact users
- Logically drill from dashboard to packets for expert analysis and problem resolution
- Customize dashboard to view key applications and metrics
- Track critical metrics such as: response time, connection details, utilization, and VoIP quality



Managing Critical Applications

Ensure availability of important applications and services. Receive early notice of degrading performance and resolve issues before they impact users.

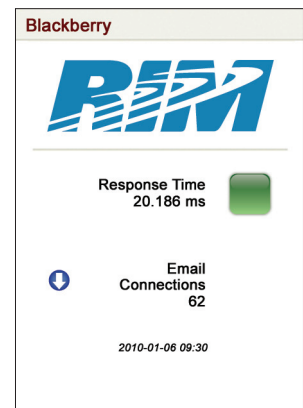
Unified Communications



Cloud Applications



Mobile Services

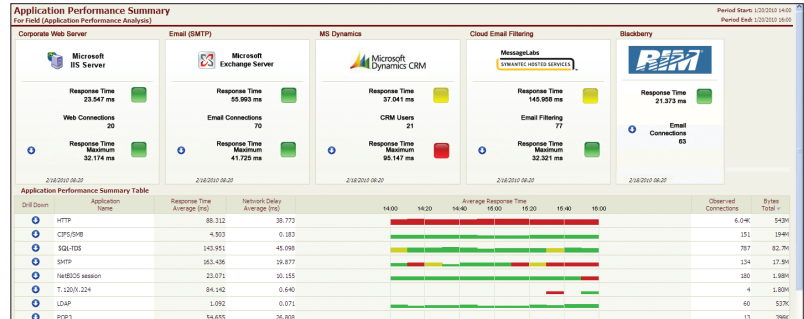


Dashboard to Immediate Resolution

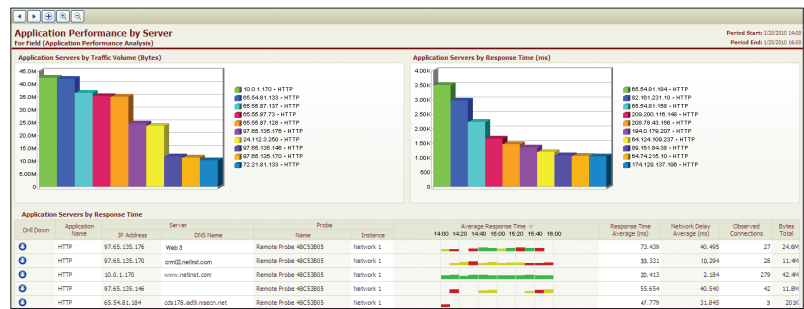
ORS provides solution-centered, user-defined workflows, which offer an intuitive approach to investigate and resolve performance problems. Within ORS, the network team defines the investigation path and views only relevant data, drilling from high-level views to specific conversations.

For example, this dashboard indicates an issue with the Microsoft Dynamics CRM service. It's a multi-tiered application with a web frontend, application server, and backend database.

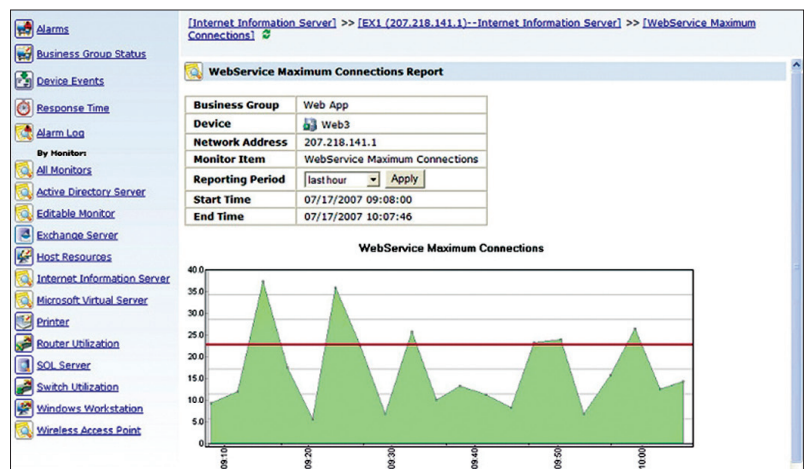
1. Identify the web component (HTTP) of the multi-tiered application is causing the delay.



2. Locate web servers responsible for the delay.



3. Drill into Observer Infrastructure to investigate specific devices, and determine Web3 was servicing more simultaneous users than it could handle.



About Network Instruments

Network Instruments, a leading provider of performance management and troubleshooting for fifteen years, helps organizations ensure the delivery of business-critical applications. The company's platform of management and reporting products provides comprehensive visibility into networks and applications to optimize performance, speed troubleshooting, and assist long-term capacity planning. Network Instruments achieved profitability in its first quarter and posted growth every year since its founding – without any external funding. Network Instruments is headquartered in Minneapolis with sales offices worldwide and distributors in over 50 countries. For more information, please visit www.networkinstruments.com.



Corporate Headquarters

Network Instruments, LLC • 10701 Red Circle Drive • Minnetonka, MN 55343 • USA
toll free (800) 526-7919 • telephone (952) 358-3800 • fax (952) 358-3801

www.networkinstruments.com

European Headquarters

Network Instruments • 4 Old Yard • Rectory Lane • Brasted, Westerham • Kent TN16 1JP • United Kingdom
telephone + 44 (0) 1959 569880 • fax + 44 (0) 1959 569881

www.networkinstruments.co.uk